

american craft

It
Started
In
Toledo

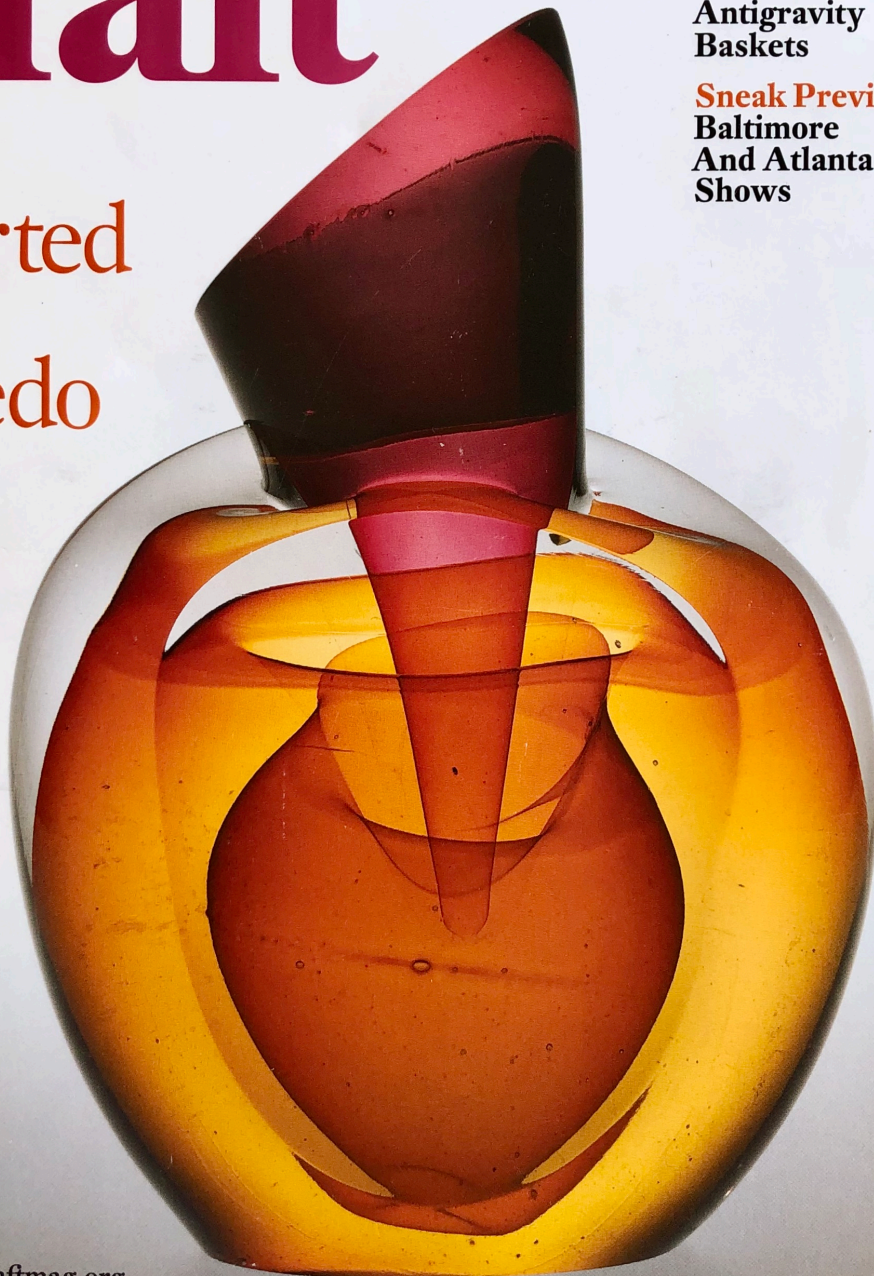
How
Artists
Got
Their
Hands
On
Glass

Quilting from the
Scrapyard

Clay Made Flesh

Antigravity
Baskets

Sneak Preview
Baltimore
And Atlanta
Shows



americancraftmag.org
February / March 2012

MEN'S DEPT

Oh, do we dare create pages dedicated to works for men? Don't we all share an eye for the beautiful? Of course, but there are those special pieces and collections that are created with men in mind and celebrate what makes a man a man.



Sword in hand

Crafted from Damascus steel, a material created by pattern welding, a sword-making technique that dates back to ancient times. Viking swords, the Japanese katana and the Indonesian kris were all made using pattern welding techniques. These cufflinks are accented with 18k gold and rubies.

Artist: Victoria Moore, victoriamoore.net



Heavy metal illusion

The Blow Torch Teapot is actually made from wheel-thrown and hand-built stoneware and made to look like real machinery by a special glazing technique.

Artist: Paveen Beer, Chunhaswasdikul



Off the cuff

Hand-forged and patterned, the Damascus Flat Cuff Twist is a masculine bracelet made from stainless steel alloys. The piece has a bold presence, but is light enough for everyday wear.

Artist: Brian Gibney, brianbiblejewelry.com

Creative contrasts

For more than 30 years, this artist has created stunning pieces, including this set of 14k gold bands, each wrapped in stainless steel for a perfect yin/yang of warm and cool.

Artist: Thomas Turner, thomasturnerjewelry.com



Suit up

This bespoke pairing includes handwoven, shadow twill plaid sport wool and silk jacket, a crosshatch vest, and dobby weave necktie in denim, olive, gray, and black. In a word: handsome.

Artists: Cecilia Frittelli and Richard Lockwood, frittelli-lockwood.com



Man cave

David Stine designs and crafts furniture using only local and native hardwoods harvested from his family's forests in rural Illinois. Every piece is a testament to the grace and majesty of the tree. The Shaven Table features a single-board top of sycamore. Seats 12.

Artist: David Stine, stinewoodworking.com

